

CENTRAL BUSINESS DISTRICT REDEVELOPMENT PROJECT

**Amendment to the
Redevelopment Plan
For the
Central Business District Redevelopment Project**

**ADOPTED: May 1, 2002
ORDINANCE: 174592**

PREPARED BY

**THE COMMUNITY REDEVELOPMENT AGENCY OF
THE CITY OF LOS ANGELES, CALIFORNIA**

The Redevelopment Plan ("Redevelopment Plan") for the Central Business District Redevelopment Project ("Project Area") adopted on July 18, 1975, by the City Council of the City of Los Angeles, California, on passage of Ordinance No. 147,480 is hereby amended to exclude certain real property as follows:

1. Section 200 of the Redevelopment Plan (Project Area Boundaries) is hereby deleted in its entirety and replaced with a revised Legal Description attached hereto as Exhibit A and incorporated herein by reference.
2. Part II of the Redevelopment Plan (Map of the Project Area) is hereby deleted in its entirety and replaced with a revised Map attached hereto as Exhibit B and incorporated herein by reference.

Except as set forth in this Amendment, the Redevelopment Plan shall remain unchanged and in full force and effect.

EXHIBIT A

REVISED LEGAL DESCRIPTION OF PROJECT AREA

[behind this page]

GEOGRAPHIC DESCRIPTIONCentral Business DistrictParcel A

That certain parcel of land in the City of Los Angeles, County of Los Angeles, State of California more particularly described as follows:

Beginning at the intersection of the centerline of the Harbor Freeway and the Hollywood Freeway, as shown on Survey Control Map No. LA 110 PKM 33.0 on file in the office of the Department of Transportation of the State of California from which a 2" Brass Calif DOT Disk stamped 'LA 110-23.83 LS 5679 1990' in concrete flush having established NAD 83 grid coordinates of North 1845778.49 feet and East 6486638.53 feet, Zone 5 of California Coordinate System as shown on said Survey Control Map, bears North 32 degrees 34 minutes 59 seconds East 602.33 feet;

1. thence South 35 degrees 19 minutes 12 seconds East 857.07 feet to the beginning of a curve, concave to the northeast and having a radius of 4,000.00 feet;
2. thence southeasterly 639.76 feet along said curve through a central angle of 09 degrees 09 minutes 50 seconds, and having a chord bearing and distance of South 39 degrees 54 minutes 07 seconds East 639.08 feet, to the beginning of a compound curve, concave to the northeast and having a radius of 9,000.00 feet;
3. thence southeasterly 248.05 feet along said curve through a central angle of 01 degrees 34 minutes 45 seconds; and having a chord bearing and distance of South 45 degrees 16 minutes 24 seconds East 248.05 feet, to the beginning of a compound curve, concave to the northeast and having a radius of 7,360.77 feet;
4. thence southeasterly 889.87 feet along said curve through a central angle of 06 degrees 55 minutes 36 seconds, and having a chord bearing and distance of South 49 degrees 31 minutes 35 seconds East 889.32 feet;
5. thence South 52 degrees 59 minutes 23 seconds East 1,653.15 feet;

P S O M A S

- 1 6. thence South 37 degrees 00 minutes 37 seconds West 6.00 feet to the beginning
- 2 of a non-tangent curve, concave to the northeast, having a radius of 3,000.00
- 3 feet and to which beginning a radial line bears South 37 degrees 00 minutes 37
- 4 seconds West;
- 5 7. thence southeasterly 299.38 feet along said curve through a central angle of 05
- 6 degrees 43 minutes 04 seconds, and having a chord bearing and distance of
- 7 South 55 degrees 57 minutes 35 seconds East 310.89 feet from which a 2" Brass
- 8 Calif DOT Disk Stamped 'LA 101-0.76 LS 5679 1990' in concrete flush having
- 9 established NAD 83 grid coordinates of North 1842183.47 feet and East
- 10 6489655.79 feet, Zone 5 of California Coordinate System as shown on said
- 11 Survey Control Map, bears North 18 degrees 32 minutes 00 seconds East 29.38
- 12 feet;
- 13 8. thence South 01 degrees 48 minutes 34 seconds West 270.74 feet;
- 14 9. thence South 01 degrees 48 minutes 34 seconds West 152.85 feet;
- 15 10. thence South 01 degrees 57 minutes 08 seconds West 97.62 feet;
- 16 11. thence South 01 degrees 51 minutes 54 seconds West 552.21 feet;
- 17 12. thence South 04 degrees 09 minutes 18 seconds West 250.24 feet;
- 18 13. thence South 01 degrees 51 minutes 53 seconds West 59.78 feet from which a
- 19 City of Los Angeles Standard Survey Monument LA H-10 (BM 12-03000)
- 20 having established NAD 83 grid coordinates of North 1831029.22 and East
- 21 6489181.96, Zone 5 of California Coordinate System on file in the Bureau of
- 22 Engineering of the Department of Public Works of said city, bears South 2
- 23 degrees 24 minutes 28 seconds West 9752.82 feet;
- 24 14. thence South 89 degrees 42 minutes 19 seconds West 293.07 feet;
- 25 15. thence North 55 degrees 26 minutes 56 seconds West 544.32 feet;
- 26 16. thence South 35 degrees 43 minutes 45 seconds West 241.85 feet;
- 27 17. thence North 48 degrees 45 minutes 56 seconds West 527.93 feet;
- 28 18. thence North 49 degrees 48 minutes 08 seconds West 94.16 feet;
- 29 19. thence South 32 degrees 57 minutes 17 seconds West 110.05 feet;
- 30 20. thence South 32 degrees 25 minutes 14 seconds West 454.14 feet;
- 31 21. thence North 53 degrees 13 minutes 30 seconds West 360.23 feet;

P S O M A S

- 1 22. thence North 53 degrees 19 minutes 29 seconds West 80.03 feet;
- 2 23. thence North 52 degrees 00 minutes 46 seconds West 336.30 feet;
- 3 24. thence North 52 degrees 00 minutes 46 seconds West 80.00 feet;
- 4 25. thence North 52 degrees 00 minutes 46 seconds West 109.65 feet;
- 5 26. thence North 37 degrees 56 minutes 41 seconds East 5.00 feet;
- 6 27. thence North 52 degrees 00 minutes 46 seconds West 201.00 feet;
- 7 28. thence North 52 degrees 00 minutes 46 seconds West 115.01 feet;
- 8 29. thence North 52 degrees 00 minutes 48 seconds West 6.50 feet;
- 9 30. thence South 37 degrees 56 minutes 59 seconds West 2.61 feet;
- 10 31. thence North 52 degrees 03 minutes 01 seconds West 9.90 feet;
- 11 32. thence North 37 degrees 56 minutes 59 seconds East 2.61 feet;
- 12 33. thence North 52 degrees 06 minutes 58 seconds West 272.32 feet;
- 13 34. thence South 37 degrees 56 minutes 59 seconds West 1.20 feet;
- 14 35. thence North 52 degrees 03 minutes 01 seconds West 10.20 feet;
- 15 36. thence North 37 degrees 56 minutes 59 seconds East 1.50 feet;
- 16 37. thence North 52 degrees 03 minutes 01 seconds West 4.50 feet;
- 17 38. thence North 05 degrees 43 minutes 26 seconds West 21.04 feet;
- 18 39. thence North 38 degrees 05 minutes 34 seconds East 470.22 feet;
- 19 40. thence North 38 degrees 40 minutes 44 seconds East 104.58 feet;
- 20 41. thence North 55 degrees 03 minutes 40 seconds West 90.69 feet;
- 21 42. thence North 52 degrees 40 minutes 20 seconds West 296.19 feet to the
- 22 beginning of a curve, concave to the northeast, and having a radius of 10.00
- 23 feet;
- 24 43. thence northwesterly 7.23 feet along said curve through a central angle of 41
- 25 degrees 23 minutes 55 seconds, and having a chord bearing and distance of
- 26 North 31 degrees 58 minutes 23 seconds West 7.07 feet to the beginning of a
- 27 reverse curve, concave to the southwest, and having a radius of 30.00 feet;
- 28 44. thence northwesterly 21.68 feet along said curve through a central angle of 41
- 29 degrees 24 minutes 18 seconds, and having a chord bearing and distance of
- 30 North 31 degrees 58 minutes 23 seconds West 21.21 feet;

P S O M A S

- 1 45. thence North 52 degrees 40 minutes 43 seconds West 38.00 feet to the
- 2 beginning of a curve, concave to the south, and having a radius of 30.00 feet;
- 3 46. thence westerly 21.68 feet along said curve through a central angle of 41
- 4 degrees 24 minutes 18 seconds, and having a chord bearing and distance of
- 5 North 73 degrees 22 minutes 52 seconds West 21.21 feet to the beginning of a
- 6 reverse curve, concave to the north, and having a radius of 10.00 feet;
- 7 47. thence westerly 7.23 feet along said curve through a central angle of 41 degrees
- 8 25 minutes 30 seconds; and having a chord bearing and distance of North 73
- 9 degrees 22 minutes 52 seconds West 7.07 feet;
- 10 48. thence North 52 degrees 39 minutes 32 seconds West 328.38 feet;
- 11 49. thence North 52 degrees 20 minutes 33 seconds West 126.49 feet;
- 12 50. thence North 52 degrees 03 minutes 07 seconds West 294.94 feet;
- 13 51. thence North 52 degrees 03 minutes 18 seconds West 99.99 feet;
- 14 52. thence North 52 degrees 03 minutes 29 seconds West 612.48 feet;
- 15 53. thence North 52 degrees 03 minutes 30 seconds West 233.55 feet;
- 16 54. thence North 52 degrees 03 minutes 30 seconds West 462.57 feet to the
- 17 beginning of a non-tangent curve, concave to the southeast, and having a radius
- 18 of 5,000.00 feet and to which beginning a radial line bears North 48 degrees 59
- 19 minutes 10 seconds West from which a 2" Brass Calif DOT Disk Stamped 'LA
- 20 10-R14.84 LS 5679 1990' in concrete flush having established NAD 83 grid
- 21 coordinates of North 1836464.48 feet and East 6478559.03 feet, of Zone 5 of
- 22 California Coordinate System as shown on said Survey Control Map, bears
- 23 South 40 degrees 36 minutes 34 seconds West 9758.50 feet;
- 24 55. thence northeasterly 458.20 feet along said curve through a central angle of 05
- 25 degrees 15 minutes 02 seconds, and having a chord bearing and distance of
- 26 North 43 degrees 38 minutes 21 seconds East 458.04 feet;
- 27 56. thence North 46 degrees 15 minutes 52 seconds East 233.63 feet to the
- 28 beginning of a curve, concave to the northwest, and having a radius of
- 29 13,000.00 feet;

P S O M A S

- 1 57. thence northeasterly 648.79 feet along said curve through a central angle of 02
- 2 degrees 51 minutes 34 seconds; and having a chord bearing and distance of
- 3 North 44 degrees 50 minutes 05 seconds East 648.72 feet;
- 4 58. thence North 43 degrees 24 minutes 18 seconds East 612.67 feet to the POINT
- 5 OF BEGINNING;

6
7 Containing 204.37 Acres

8
9 This geographic description has been prepared for jurisdictional boundary changes,
10 pursuant to Section 54900 to 54903, of the Government Code, and is not related to
11 property ownership.

12
13
14
15
16 

17 Robert C. Olson, PLS 5490

18 Psomas

19 11.12.2001



20
21
22
23
24
25
26
27
28
29
30
31

GEOGRAPHIC DESCRIPTION

Central Business District

Parcel B

That certain parcel of land in the City of Los Angeles, County of Los Angeles, State of California more particularly described as follows:

Beginning at a point on the curved centerline of the Harbor Freeway, as shown on Survey Control Map No. LA 110 PKM 33.0 on file in the office of the Department of Transportation of the State of California, having a radius of 3000.00 feet, distant northeasterly 729.85 feet along said curve through a central angle of 13 degrees 56 minutes 21 seconds, a chord bearing and distance of North 47 degrees 03 minutes 03 seconds East 728.03 feet from the southwesterly terminus thereof from which a 2" Brass Calif DOT Disk stamped 'LA 110-23.83 LS 5679 1990' in concrete flush having established NAD 83 grid coordinates of North 1845778.49 feet and East 6486638.53 feet, Zone 5 of California Coordinate System as shown on said Survey Control Map, bears North 39 degrees 49 minutes 46 seconds East 5241.21 feet:

- 59. thence South 50 degrees 06 minutes 21 seconds East 163.70 feet to the beginning of a non-tangent curve, concave to the southwest, and having a radius of 100.00 feet and to which beginning a radial line bears North 20 degrees 24 minutes 27 seconds East;
- 60. thence southeasterly 25.93 feet along said curve through a central angle of 14 degrees 51 minutes 16 seconds, and having a chord bearing and distance of South 62 degrees 09 minutes 55 seconds East 25.85 feet;
- 61. thence South 79 degrees 48 minutes 16 seconds East 73.29 feet to the beginning of a non-tangent curve, concave to the southwest, and having a radius of 268.00 feet and to which beginning a radial line bears North 15 degrees 10 minutes 57 seconds East;

P S O M A S

- 1 62. thence southeasterly 107.52 feet along said curve through a central angle of 22
- 2 degrees 59 minutes 12 seconds, and having a chord bearing and distance of South
- 3 63 degrees 19 minutes 27 seconds East 106.80 feet;
- 4 63. thence South 51 degrees 49 minutes 52 seconds East 111.34 feet;
- 5 64. thence South 56 degrees 49 minutes 53 seconds East 140.46 feet;
- 6 65. thence South 51 degrees 59 minutes 22 seconds East 137.03 feet;
- 7 66. thence South 51 degrees 59 minutes 03 seconds East 136.93 feet;
- 8 67. thence South 55 degrees 18 minutes 30 seconds East 110.19 feet;
- 9 68. thence South 52 degrees 00 minutes 05 seconds East 165.00 feet;
- 10 69. thence North 38 degrees 00 minutes 53 seconds East 80.87 feet;
- 11 70. thence North 38 degrees 00 minutes 46 seconds East 98.69 feet;
- 12 71. thence South 51 degrees 39 minutes 52 seconds East 164.22 feet;
- 13 72. thence South 52 degrees 41 minutes 42 seconds East 83.01 feet;
- 14 73. thence North 38 degrees 21 minutes 17 seconds East 147.20 feet;
- 15 74. thence North 38 degrees 21 minutes 18 seconds East 60.00 feet;
- 16 75. thence South 51 degrees 59 minutes 29 seconds East 161.10 feet;
- 17 76. thence South 38 degrees 10 minutes 17 seconds East 82.10 feet;
- 18 77. thence South 52 degrees 02 minutes 25 seconds East 253.38 feet;
- 19 78. thence North 38 degrees 41 minutes 49 seconds East 55.04 feet;
- 20 79. thence South 51 degrees 43 minutes 42 seconds East 413.65 feet;
- 21 80. thence South 38 degrees 01 minutes 48 seconds West 292.98 feet;
- 22 81. thence South 36 degrees 19 minutes 56 seconds West 69.04 feet;
- 23 82. thence South 51 degrees 48 minutes 12 seconds East 326.71 feet;
- 24 83. thence South 37 degrees 56 minutes 42 seconds West 235.90 feet;
- 25 84. thence South 52 degrees 08 minutes 44 seconds East 237.94 feet from which a 2"
- 26 Brass Calif DOT Disk Stamped 'LA 101-0.76 LS 5679 1990' having established
- 27 NAD 83 grid coordinates of North 1842183.47 feet and East 6489655.79 feet,
- 28 Zone 5 of California Coordinate System as shown on said Survey Control Map,
- 29 bears North 61 degrees 48 minutes 39 seconds East 4843.90 feet;
- 30 85. thence South 38 degrees 15 minutes 54 seconds West 346.74 feet;
- 31 86. thence North 51 degrees 59 minutes 13 seconds West 154.00 feet;

P S O M A S

- 1 87. thence North 58 degrees 15 minutes 12 seconds West 82.48 feet;
- 2 88. thence North 51 degrees 59 minutes 25 seconds West 195.99 feet;
- 3 89. thence South 37 degrees 57 minutes 20 seconds West 214.01 feet;
- 4 90. thence North 51 degrees 59 minutes 09 seconds West 132.94 feet;
- 5 91. thence North 37 degrees 56 minutes 56 seconds West 82.47 feet;
- 6 92. thence North 51 degrees 59 minutes 22 seconds West 165.89 feet;
- 7 93. thence South 38 degrees 11 minutes 03 seconds West 258.84 feet;
- 8 94. thence North 51 degrees 48 minutes 35 seconds West 256.38 feet;
- 9 95. thence South 37 degrees 22 minutes 45 seconds West 202.49 feet;
- 10 96. thence South 34 degrees 05 minutes 48 seconds West 83.18 feet;
- 11 97. thence South 37 degrees 43 minutes 16 seconds West 586.93 feet;
- 12 98. thence South 41 degrees 08 minutes 53 seconds West 93.14 feet;
- 13 99. thence South 38 degrees 17 minutes 02 seconds West 353.27 feet;
- 14 100. thence South 52 degrees 02 minutes 27 seconds East 5.00 feet;
- 15 101. thence South 38 degrees 17 minutes 01 seconds West 285.87 feet;
- 16 102. thence South 52 degrees 02 minutes 13 seconds East 410.45 feet;
- 17 103. thence South 38 degrees 00 minutes 33 seconds West 418.35 feet;
- 18 104. thence North 52 degrees 02 minutes 13 seconds West 161.23 feet;
- 19 105. thence South 37 degrees 36 minutes 29 seconds West 157.51 feet from which a
20 City of Los Angeles Standard Survey Monument LA H-10 (BM 12-03000)
21 having established NAD 83 grid coordinates of North 1831029.22 feet and East
22 6489181.96 feet, Zone 5 of the California Coordinate System on file in the
23 Bureau of Engineering of the Department of Public Works, bears South 41
24 degrees 49 minutes 34 seconds East 9409.19 feet;
- 25 106. thence North 52 degrees 00 minutes 43 seconds West 143.09 feet;
- 26 107. thence North 50 degrees 53 minutes 14 seconds West 132.82 feet;
- 27 108. thence North 52 degrees 03 minutes 08 seconds West 173.14 feet;
- 28 109. thence South 37 degrees 59 minutes 09 seconds West 2.50 feet;
- 29 110. thence North 52 degrees 00 minutes 56 seconds West 57.00 feet;
- 30 111. thence North 37 degrees 59 minutes 09 seconds East 2.50 feet;
- 31 112. thence North 52 degrees 00 minutes 56 seconds West 53.16 feet;

P S O M A S

- 1 113. thence South 37 degrees 59 minutes 09 seconds West 2.50 feet;
- 2 114. thence North 52 degrees 00 minutes 56 seconds West 105.02 feet;
- 3 115. thence North 52 degrees 00 minutes 56 seconds West 305.74 feet to the beginning
- 4 of a curve, concave to the east, and having a radius of 20.00 feet;
- 5 116. thence northerly 31.39 feet along said curve through a central angle of 89 degrees
- 6 55 minutes 24 seconds, and having a chord bearing and distance of North 7
- 7 degrees 03 minutes 14 seconds West 28.27 feet;
- 8 117. thence North 37 degrees 57 minutes 06 seconds East 526.19 feet;
- 9 118. thence North 37 degrees 57 minutes 06 seconds East 99.30 feet;
- 10 119. thence North 52 degrees 02 minutes 42 seconds West 90.02 feet;
- 11 120. thence North 52 degrees 02 minutes 42 seconds West 151.74 feet;
- 12 121. thence North 52 degrees 02 minutes 32 seconds West 20.00 feet;
- 13 122. thence North 52 degrees 02 minutes 17 seconds West 146.87 feet;
- 14 123. thence South 67 degrees 45 minutes 02 seconds West 180.72 feet;
- 15 124. thence North 61 degrees 26 minutes 06 seconds West 118.31 feet;
- 16 125. thence North 37 degrees 32 minutes 45 seconds East 10.12 feet;
- 17 126. thence North 61 degrees 26 minutes 06 seconds West 56.70 feet;
- 18 127. thence South 37 degrees 32 minutes 45 seconds West 10.12 feet;
- 19 128. thence North 61 degrees 26 minutes 06 seconds West 55.00 feet;
- 20 129. thence North 28 degrees 39 minutes 42 seconds East 10.01 feet;
- 21 130. thence North 60 degrees 33 minutes 22 seconds West 195.04 feet;
- 22 131. thence North 61 degrees 26 minutes 06 seconds West 34.96 feet;
- 23 132. thence North 71 degrees 00 minutes 53 seconds West 78.11 feet;
- 24 133. thence North 61 degrees 26 minutes 09 seconds West 30.00 feet;
- 25 134. thence North 51 degrees 08 minutes 37 seconds West 81.57 feet;
- 26 135. thence North 37 degrees 13 minutes 24 seconds West 124.04 feet;
- 27 136. thence North 52 degrees 02 minutes 39 seconds West 120.46 feet;
- 28 137. thence North 40 degrees 45 minutes 51 seconds West 301.20 feet from which a 2"
- 29 Brass Calif DOT Disk stamped 'LA 10-R14.84 LS 5679 1990' having established
- 30 NAD 83 grid coordinates of North 1836464.48 feet and East 6478559.03 feet of

P S O M A S

1 Zone 5 of California Coordinate System as shown on said Survey Control Map,
 2 bears South 34 degrees 51 minutes 06 seconds West 4387.61 feet;
 3 138. thence North 53 degrees 50 minutes 00 seconds East 2,029.47 feet to the
 4 beginning of a curve, concave to the northwest, and having a radius of 3,000.00
 5 feet;
 6 139. thence northeasterly 729.82 feet along said curve through a central angle of 13
 7 degrees 56 minutes 19 seconds, and having a chord bearing and distance of North
 8 47 degrees 03 minutes 02 seconds East 728.03 feet to the POINT OF
 9 BEGINNING.

10
11 Containing 165.10 Acres

12
13 This geographic description has been prepared for jurisdictional boundary changes,
14 pursuant to Section 54900 to 54903, of the Government Code, and is not related to
15 property ownership.

16
17
18
19
20 

21 Robert C. Olson, PLS 5490

22 Psomas



23
24 11.12.2001

GEOGRAPHIC DESCRIPTION

Central Business District

Parcel C

That certain parcel of land in the City of Los Angeles, County of Los Angeles, State of California more particularly described as follows:

Beginning at the intersection of the centerline of the Harbor Freeway and the westbound roadway centerline of the Santa Monica Freeway , as shown on Survey Control Map No. LA 110 PKM 33.0, on file in the office of the Department of Transportation of the State of California from which a 2" Brass Calif DOT Disk Stamped 'LA 10-R14.84 LS 5679 1990' in concrete having established NAD 83 grid coordinates of North 1836464.48 feet and East 6478559.03 feet, Zone 5 of California Coordinate System as shown on said Survey control Map, bears North 76 degrees 06 minutes 05 seconds West 67.27 feet;

140. thence North 06 degrees 56 minutes 47 seconds East 730.99 feet along the centerline of said Harbor Freeway to the beginning of a curve, concave to the southeast and having a radius of 3,000.00 feet;

141. thence northeasterly 2,464.76 feet along said curve through a central angle of 47 degrees 04 minutes 24 seconds, and having a chord bearing and distance of North 30 degrees 28 minutes 59 seconds East 2396.02 feet;

142. thence North 54 degrees 01 minutes 04 seconds East 354.40 feet from which a 2" Brass Calif DOT Disk stamped 'LA 110-23.83 LS 5679 1990' having established NAD 83 grid coordinates of North 1845778.49 feet and East 6486638.53 feet, Zone 5 of California Coordinate System as shown on said Survey Control Map, bears North 45 degrees 14 minutes 36 seconds East 8999.85 feet;

143. thence South 61 degrees 42 minutes 25 seconds East 109.07 feet to the beginning of a non-tangent curve, concave to the southeast, having a radius of 930.50 feet

P S O M A S

- 1 and to which beginning a radial line bears North 36 degrees 28 minutes 35
2 seconds West;
- 3 144. thence southwesterly 29.76 feet along said curve through a central angle of 01
4 degrees 49 minutes 57 seconds, and having a chord bearing and distance of South
5 52 degrees 36 minutes 27 seconds West 29.76 feet to the beginning of a non-
6 tangent curve, concave to the west, having a radius of 6.00 feet and to which
7 beginning a radial line bears North 42 degrees 34 minutes 56 seconds East;
- 8 145. thence southerly 10.14 feet along said curve through a central angle of 96 degrees
9 48 minutes 13 seconds, and having a chord bearing and distance of South 0
10 degrees 59 minutes 03 seconds West 8.97 feet;
- 11 146. thence South 49 degrees 23 minutes 10 seconds West 62.32 feet to the beginning
12 of a curve, concave to the southeast and having a radius of 201.35 feet;
- 13 147. thence southwesterly 74.20 feet along said curve through a central angle of 21
14 degrees 06 minutes 47 seconds, and having a chord bearing and distance of South
15 38 degrees 49 minutes 47 seconds West 73.78 feet;
- 16 148. thence South 28 degrees 16 minutes 23 seconds West 101.13 feet;
- 17 149. thence South 61 degrees 43 minutes 37 seconds East 7.87 feet;
- 18 150. thence South 05 degrees 06 minutes 06 seconds West 69.07 feet;
- 19 151. thence South 61 degrees 51 minutes 25 seconds East 473.98 feet;
- 20 152. thence South 28 degrees 13 minutes 37 seconds West 265.00 feet;
- 21 153. thence South 61 degrees 51 minutes 25 seconds East 64.00 feet;
- 22 154. thence South 16 degrees 50 minutes 32 seconds East 28.18 feet to the beginning
23 of a non-tangent curve, concave to the north, having a radius of 549.00 feet and to
24 which beginning a radial line bears South 27 degrees 12 minutes 57 seconds
25 West;
- 26 155. thence easterly 226.87 feet along said curve through a central angle of 23 degrees
27 40 minutes 39 seconds, and having a chord bearing and distance of South 74
28 degrees 37 minutes 23 seconds East 225.26 feet;
- 29 156. thence South 86 degrees 27 minutes 43 seconds East 335.80 feet to the beginning
30 of a curve, concave to the south and having a radius of 650.93 feet;

P S O M A S

- 1 157. thence easterly 210.20 feet along said curve through a central angle of 18 degrees
- 2 30 minutes 08 seconds, and having a chord bearing and distance of South 77
- 3 degrees 12 minutes 39 seconds East 209.29 feet;
- 4 158. thence North 75 degrees 29 minutes 13 seconds East 32.04 feet;
- 5 159. thence South 51 degrees 56 minutes 44 seconds East 105.68 feet from which a 2"
- 6 Brass Calif DOT Disk Stamped 'LA 101-0.76 LS 5679 1990' having established
- 7 NAD 83 grid coordinates of North 1842183.47 feet and East 6489655.79 feet,
- 8 Zone 5 of California Coordinate System as shown on said Survey Control Map,
- 9 bears North 65 degrees 23 minutes 24 seconds East 9072.75 feet;
- 10 160. thence South 37 degrees 53 minutes 02 seconds West 123.82 feet;
- 11 161. thence South 37 degrees 53 minutes 02 seconds West 577.31 feet;
- 12 162. thence South 37 degrees 53 minutes 02 seconds West 60.00 feet;
- 13 163. thence South 37 degrees 53 minutes 02 seconds West 636.66 feet;
- 14 164. thence South 34 degrees 37 minutes 16 seconds West 131.06 feet;
- 15 165. thence South 28 degrees 08 minutes 45 seconds West 1183.88 feet;
- 16 166. thence South 28 degrees 09 minutes 02 seconds West 59.23 feet;
- 17 167. thence South 28 degrees 08 minutes 51 seconds West 277.78 feet from which a
- 18 City of Los Angeles Standard Survey Monument LA H-10 (BM 12-03000)
- 19 having established NAD 83 grid coordinates of North 1831029.22 feet and East
- 20 6489181.96 feet, Zone 5 of California Coordinate System on file in the Bureau of
- 21 Engineering of the Department of Public Works of said city, bears South 62
- 22 degrees 53 minutes 45 seconds East 10587.78 feet;
- 23 168. thence North 49 degrees 58 minutes 24 seconds West 73.48 feet to the beginning
- 24 of a curve, concave to the southwest and having a radius of 2,964.00 feet;
- 25 169. thence northwesterly 842.18 feet along said curve through a central angle of 16
- 26 degrees 16 minutes 47 seconds, and having a chord bearing and distance of North
- 27 57 degrees 55 minutes 24 seconds West 839.35 feet to the beginning of a
- 28 compound curve, concave to the south and having a radius of 1,500.00 feet;
- 29 170. thence westerly 341.65 feet along said curve through a central angle of 13 degrees
- 30 03 minutes 00 seconds, and having a chord bearing and distance of North 72
- 31 degrees 35 minutes 17 seconds West 341.91 feet to the POINT OF BEGINNING.

P S O M A S

1
2
3
4
5
6
7
8
9
10
11
12
13
14
15
16
17
18
19
20
21
22
23
24
25
26
27
28
29
30
31

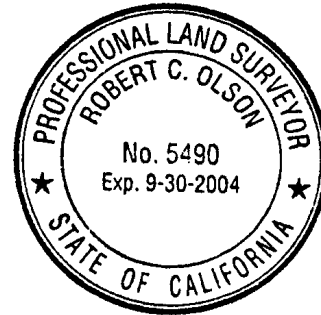
Containing 93.68 Acres

This geographic description has been prepared for jurisdictional boundary changes, pursuant to Section 54900 to 54903, of the Government Code, and is not related to property ownership.



Robert C. Olson, PLS 5490

Psomas



11.12.2001

GEOGRAPHIC DESCRIPTION

Central Business District

Parcel D

1
2
3
4
5
6
7
8
9
10
11
12
13
14
15
16
17
18
19
20
21
22
23
24
25
26
27
28
29
30

That certain parcel of land in the City of Los Angeles, County of Los Angeles, State of California more particularly described as follows:

Beginning at a point in the southerly line of 3rd Street as it presently exists and from which a 2" Brass Calif DOT Disk stamped 'LA 110-23.83 LS 5679 1990' having established NAD 83 grid coordinates of North 1845778.49 feet and East 6486638.53 feet, Zone 5 of California Coordinate System as shown on Survey Control Map No. LA 110 PKM 33.0 on file in the office of the Department of Transportation of said state, bears North 14 degrees 38 minutes 45 seconds West 6369.32 feet;

- 171. thence South 62 degrees 16 minutes 14 seconds East, 370.37 feet;
- 172. thence South 12 degrees 41 minutes 07 seconds East, 19.45 feet from which a 2" Brass Calif DOT disk Stamped 'LA 101-0.76 LS 5679 1990' having established NAD 83 grid coordinates of North 1842183.47 feet and East 6489655.79 feet, Zone 5 of California Coordinate System as shown on said Survey Control Map, bears North 21 degrees 17 minutes 06 seconds East 2960.60 feet;
- 173. thence South 36 degrees 54 minutes 10 seconds West, 213.60 feet;
- 174. thence South 81 degrees 53 minutes 17 seconds West, 14.15 feet from which a City of Los Angeles Standard Survey Monument LA H-10 (BM 12-03000) having established NAD 83 grid coordinates of North 1831029.22 feet and East 6489181.96 feet, Zone 5 of California Coordinate System said intersection bears South 5 degrees 09 minutes 51 seconds East 8256.32 feet on file in the Bureau of Engineering of the Department of Public Works of said city;
- 175. thence North 53 degrees 04 minutes 59 seconds West, 298.83 feet;
- 176. thence North 20 degrees 23 minutes 32 seconds West, 25.25 feet from which a 2" Brass Calif DOT Disk Stamped 'LA 10-R14.84 LS 5679 1990' having established

P S O M A S


1
2
3
4
5
6
7
8
9
10
11
12
13
14
15
16
17
18
19
20
21
22
23
24
25
26
27
28
29
30
31

NAD 83 grid coordinates of North 1836464.48 feet and East 6478559.03 feet,
Zone 5 of California Coordinate System, as shown on survey Control Map No.
LA 110 PKM 33.0 on file in the office of the Department of Transportation of the
State of California, bears South 72 degrees 40 minutes 59 seconds West 10047.49
feet;

- 177. thence North 12 degrees 18 minutes 01 seconds East, 77.32 feet;
- 178. thence North 16 degrees 55 minutes 59 seconds East, 81.57 feet;
- 179. thence North 67 degrees 19 minutes 57 seconds East, 19.12 feet to the POINT OF
BEGINNING.

Containing 1.73 Acres

This geographic description has been prepared for jurisdictional boundary changes,
pursuant to Section 54900 to 54903, of the Government Code, and is not related to
property ownership.



Robert C. Olson, PLS 5490

Psomas



GEOGRAPHIC DESCRIPTION

Central Business District

Parcel E

That certain parcel of land in the City of Los Angeles, County of Los Angeles, State of California more particularly described as follows:

Beginning at a point in the southerly line of 4th Street as it presently exists and from which a 2" Brass Calif DOT Disk stamped 'LA 110-23.83 LS 5679 1990' having established NAD 83 grid coordinates of North 1845778.49 feet and East 6486638.53 feet, Zone 5 of California Coordinate System as shown on Survey Control Map No. LA 110 PKM 33.0 on file in the office of the Department of Transportation of said state, bears North 18 degrees 20 minutes 23 seconds West 7855.22 feet;

180. thence South 71 degrees 32 minutes 34 seconds East, 391.64 feet from which a 2" Brass Calif DOT disk Stamped 'LA 101-0.76 LS 5679 1990' having established NAD 83 grid coordinates of North 1842183.47 feet and East 6489655.79 feet, Zone 5 of California Coordinate System as shown on said Survey Control Map, bears North 2 degrees 30 minutes 10 seconds East 3988.81 feet;

181. thence South 33 degrees 50 minutes 12 seconds East, 16.07 feet;

182. thence South 03 degrees 00 minutes 44 seconds West, 559.99 feet;

183. thence North 86 degrees 59 minutes 17 seconds West, 10.00 feet;

184. thence South 03 degrees 00 minutes 44 seconds West, 1,190.83 feet;

185. thence South 03 degrees 00 minutes 34 seconds West, 121.84 feet;

186. thence South 03 degrees 00 minutes 58 seconds West, 634.91 feet to the beginning of a curve concave northwesterly, and having a radius of 20.00 feet, from which a City of Los Angeles Standard Survey Monument LA H-10 (BM 12-03000) having established NAD 83 grid coordinates of North 1831029.22 feet and East 6489181.96 feet, Zone 5 of California Coordinate System on file in the

P S O M A S

1 Bureau of Engineering of the Department of Public Works of said city, bears

2 South 2 degrees 03 minutes 13 seconds West 4655.30 feet;

3 187. thence southerly, southwesterly, westerly and northwesterly 44.42 feet along said
4 curve through a central angle of 127 degrees 15 minutes 32 seconds, and having a
5 chord bearing and distance of South 66 degrees 38 minutes 44 seconds West,
6 35.84 feet;

7 188. thence North 49 degrees 43 minutes 30 seconds West, 600.59 feet to the
8 beginning of a curve concave easterly, and having a radius of 20.00 feet, from
9 which a 2" Brass Calif DOT Disk Stamped 'LA 10-R14.84 LS 5679 1990' having
10 established NAD 83 grid coordinates of North 1836464.48 feet and East
11 6478559.03 feet, Zone 5 of California Coordinate System as shown on survey
12 Control Map No. LA 110 PKM 33.0 on file in the office of the Department of
13 Transportation of the State of California, bears North 87 degrees 43 minutes 03
14 seconds West 10,266.76 feet;

15 189. thence northwesterly, northerly and northeasterly 31.40 feet along said curve
16 through a central angle of 89 degrees 57 minutes 48 seconds, and having a chord
17 bearing and distance of North 4 degrees 44 minutes 36 seconds West, 28.28 feet;

18 190. thence North 40 degrees 14 minutes 18 seconds East, 185.86 feet;

19 191. thence North 04 degrees 47 minutes 16 seconds East, 327.76 feet;

20 192. thence North 03 degrees 35 minutes 25 seconds East, 134.06 feet;

21 193. thence North 02 degrees 59 minutes 56 seconds East, 1,629.94 feet;

22 194. thence North 57 degrees 39 minutes 30 seconds East, 16.25 feet to the POINT OF
23 BEGINNING.

24
25 Containing 22.70 Acres
26
27
28
29
30
31

P S O M A S

1 This geographic description has been prepared for jurisdictional boundary changes,
2 pursuant to Section 54900 to 54903, of the Government Code, and is not related to
3 property ownership.

4
5 

6 Robert C. Olson, PLS 5490

7 Psomas



11.12.2001

GEOGRAPHIC DESCRIPTION

Central Business District

Parcel F

That certain parcel of land in the City of Los Angeles, County of Los Angeles, State of California more particularly described as follows:

Beginning at a point in the southeasterly line of Central Avenue as it presently exists from which a 2" Brass Calif DOT Disk stamped 'LA 110-23.83 LS 5679 1990' having established NAD 83 grid coordinates of North 1845778.49 feet and East 6486638.53 feet, Zone 5 of California Coordinate System as shown on Survey Control Map No. LA 110 PKM 33.0 on file in the office of the Department of Transportation of the State of California, bears North 6 degrees 57 minutes 20 seconds West 11,207.76 feet;

195. thence South 45 degrees 06 minutes 05 seconds East, 1,565.25 feet from which a 2" Brass Calif DOT disk Stamped 'LA 101-0.76 LS 5679 1990' having established NAD 83 grid coordinates of North 1842183.47 feet and East 6489655.79 feet, Zone 5 of California Coordinate System as shown on said Survey Control Map, bears North 3 degrees 39 minutes 10 seconds East 8652.68 feet;

196. thence South 28 degrees 58 minutes 41 seconds West, 561.91 feet to the beginning of a curve concave northwesterly, and having a radius of 20.00 feet from which a City of Los Angeles Standard Survey Monument LA H-10 (BM 12-03000) having established NAD 83 grid coordinates of North 1831029.22 feet and East 6489181.96 feet, Zone 5 of California Coordinate System, on file in the Bureau of Engineering of the Department of Public Works of said city, bears South 9 degrees 47 minutes 04 seconds East 2057.52 feet;

197. thence southerly, southwesterly, westerly and northwesterly 37.89 feet along said curve through a central angle of 108 degrees 33 minutes 26 seconds, and having a

P S O M A S

1 chord bearing and distance of South 83 degrees 15 minutes 24 seconds West
 2 32.47 feet;
 3 198. thence North 42 degrees 27 minutes 53 seconds West 216.81 feet;
 4 199. thence North 44 degrees 03 minutes 39 seconds West, 663.51 feet;
 5 200. thence South 44 degrees 58 minutes 39 seconds West, 452.90 feet;
 6 201. thence North 44 degrees 03 minutes 22 seconds West, 250.10 feet;
 7 202. thence North 44 degrees 15 minutes 36 seconds West, 60.01 feet;
 8 203. thence North 44 degrees 05 minutes 04 seconds West, 178.33 feet from which a
 9 2" Brass Calif DOT Disk Stamped 'LA 10-R14.84 LS 5679 1990' having
 10 established NAD 83 grid coordinates of North 1836464.48 feet and East
 11 6478559.03 feet, Zone 5 of California Coordinate System as shown on said
 12 Survey Control Map bears North 72 degrees 55 minutes 23 seconds West 9345.26
 13 feet;
 14 204. thence North 25 degrees 52 minutes 00 seconds East, 242.68 feet;
 15 205. thence South 44 degrees 05 minutes 05 seconds East, 10.65 feet;
 16 206. thence North 25 degrees 52 minutes 00 seconds East, 130.52 feet;
 17 207. thence North 25 degrees 55 minutes 07 seconds East, 120.91 feet;
 18 208. thence North 25 degrees 51 minutes 19 seconds East, 551.31 feet to the POINT
 19 OF BEGINNING.

21 Containing 25.28 Acres

23 This geographic description has been prepared for jurisdictional boundary changes,
 24 pursuant to Section 54900 to 54903, of the Government Code, and is not related to
 25 property ownership.

28 

30 Robert C. Olson, PLS 5490

31 Psomas

11.12.2001



GEOGRAPHIC DESCRIPTION

Central Business District

Parcel G

1
2
3
4
5
6
7
8
9
10
11
12
13
14
15
16
17
18
19
20
21
22
23
24
25
26
27
28
29

That certain parcel of land in the City of Los Angeles, County of Los Angeles, State of California more particularly described as follows:

Beginning at the intersection of the southeasterly right-of-way line of 9th Street and the southwesterly right-of-way line of Main Street as they presently exist and from which a 2" Brass Calif DOT Disk stamped 'LA 110-23.83 LS 5679 1990' having established NAD 83 grid coordinates of North 1845778.49 feet and East 6486638.53 feet, Zone 5 of California Coordinate System as shown on Survey Control Map No. LA 110 PKM 33.0 on file in the office of the Department of Transportation of the State of California, bears North 15 degrees 08 minutes 09 seconds West 8525.85 feet;

209. thence South 42 degrees 14 minutes 25 seconds East, 308.76 feet;

210. thence South 42 degrees 14 minutes 25 seconds East, 95.21 feet;

211. thence South 42 degrees 14 minutes 25 seconds East, 299.65 feet from which a 2" Brass Calif DOT disk Stamped 'LA 101-0.76 LS 5679 1990' having established NAD 83 grid coordinates of North 1842183.47 feet and East 6489655.79 feet, Zone 5 of California Coordinate System as shown on said Survey Control Map, bears North 42 degrees 46 minutes 33 seconds East 7024.32 feet;

212. thence South 49 degrees 26 minutes 33 seconds West, 607.79 feet to the beginning of a non-tangent curve concave northeasterly, having a radius of 1350 feet and to which beginning a radial line bears South 35 degrees 18 minutes 08 seconds West, from which beginning a City of Los Angeles Standard Survey Monument LA H-10 (BM 12-03000) having established NAD 83 grid coordinates of North 1831029.22 feet and East 6489181.96 feet, Zone 5 of California Coordinate System on file in the Bureau of Engineering of the Department of

P S O M A S

- 1 Public Works of said city, bears South 40 degrees 20 minutes 22 seconds East
- 2 7350.97 feet;
- 3 213. thence northwesterly 405.23 feet along said curve through a central angle of 17
- 4 degrees 11 minutes 55 seconds, and having a chord bearing and distance of North
- 5 46 degrees 05 minutes 54 seconds West, 403.71 feet;
- 6 214. thence North 37 degrees 29 minutes 57 seconds West, 179.90 feet to the
- 7 beginning of a curve concave southwesterly, and having a radius of 900.00 feet;
- 8 215. thence northwesterly 151.68 feet along said curve, through a central angle of 9
- 9 degrees 39 minutes 22 seconds, and having a chord bearing and distance of North
- 10 42 degrees 19 minutes 38 seconds West, 151.50 feet and from which a 2" Brass
- 11 Calif DOT Disk Stamped 'LA 10-R14.84 LS 5679 1990' having established NAD
- 12 83 grid coordinates of North 1836464.48 feet and East 6478559.03 feet, Zone 5 of
- 13 California Coordinate System as shown said Survey Control Map, bears South 82
- 14 degrees 28 minutes 50 seconds West 5368.29 feet;
- 15 216. thence North 52 degrees 10 minutes 09 seconds East, 621.90 feet to the POINT
- 16 OF BEGINNING .

17
18 Containing 10.35 Acres

19
20 This geographic description has been prepared for jurisdictional boundary changes,
21 pursuant to Section 54900 to 54903, of the Government Code, and is not related to
22 property ownership.

23
24
25
26
27 *Robert C. Olson*

28 Robert C. Olson, PLS 5490

29 Psomas

11.12.2001



GEOGRAPHIC DESCRIPTION

Central Business District

Parcel H

That certain parcel of land in the City of Los Angeles, County of Los Angeles, State of California more particularly described as follows:

Beginning at the intersection of the centerline of Santee Street and the centerline of Olympic Boulevard as they both presently exist, said intersection being the beginning of a non-tangent curve concave northeasterly, having a radius of 1350 feet, and to which beginning a radial line bears South 35 degrees 18 minutes 08 seconds West and from which beginning a 2" Brass Calif DOT Disk stamped 'LA 110-23.83 LS 5679 1990' having established NAD 83 grid coordinates of North 1845778.49 feet and East 6478599.03 feet, Zone 5 of California Coordinate System as shown on Survey Control Map No. LA 110 PKM 33.0 on file in the office of the Department of Transportation of the State of California, bears North 13 degrees 36 minutes 48 seconds East 9410.56 feet;

217. thence southeasterly 26.60 feet along said curve through a central angle of 1 degree 07 minutes 44 seconds, and having a chord bearing and distance of South 55 degrees 15 minutes 44 seconds East 26.60 feet;

218. thence South 55 degrees 49 minutes 36 seconds East 64.71 feet to the beginning of a curve concave southwesterly, having a radius of 1350 feet;

219. thence southeasterly 207.15 feet along said curve, through a central angle of 8 degrees 47 minutes 30 seconds, and having a chord bearing and distance of South 51 degrees 25 minutes 51 seconds East 206.95 feet;

220. thence South 47 degrees 02 minutes 06 seconds East, 58.46 feet;

221. thence North 42 degrees 57 minutes 54 seconds East, 14.42 feet;

222. thence South 46 degrees 22 minutes 33 seconds East, 415.40 feet from which a 2" Brass Calif DOT disk Stamped 'LA 101-0.76 LS 5679 1990' having established

P S O M A S

- 1 NAD 83 grid coordinates of North 1842183.47 feet and East 6489655.79 feet,
2 Zone 5 of California Coordinate System as shown on said Survey Control Map,
3 bears North 37 degree 30 minutes 27 seconds East 7623.56 feet;
4 223. thence South 43 degrees 37 minutes 27 seconds West, 65.00 feet;
5 224. thence South 41 degrees 42 minutes 43 seconds West, 218.86 feet;
6 225. thence North 47 degrees 46 minutes 16 seconds West 4.23 feet;
7 226. thence South 40 degrees 30 minutes 55 seconds West, 4.49 feet;
8 227. thence South 34 degrees 01 minutes 12 seconds West, 188.24 feet;
9 228. thence South 32 degrees 26 minutes 05 seconds West, 72.31 feet;
10 229. thence South 34 degrees 01 minutes 12 seconds West, 338.76 feet;
11 230. thence North 55 degrees 53 minutes 32 seconds West, 2.00 feet;
12 231. thence South 34 degrees 01 minutes 12 seconds West, 200.00 feet;
13 232. thence South 55 degrees 53 minutes 32 seconds East, 2.00 feet;
14 233. thence South 34 degrees 01 minutes 12 seconds West, 34.83 feet from which a
15 City of Los Angeles Standard Survey Monument LA H-10 (BM 12-03000)
16 having established NAD 83 grid coordinates of North 1831029.22 feet and East
17 6489181.96 feet, Zone 5 of California Coordinate System on file in the Bureau of
18 Engineering of the Department of Public Works of said city, bears South 48
19 degrees 57 minutes 57 seconds East 6402.35 feet;
20 234. thence North 61 degrees 19 minutes 50 seconds West, 62.27 feet;
21 235. thence North 52 degrees 08 minutes 00 seconds West, 150.32 feet;
22 236. thence North 52 degrees 04 minutes 34 seconds West, 20.05 feet;
23 237. thence North 52 degrees 02 minutes 17 seconds West, 150.66 feet from which a
24 2" Brass Calif DOT Disk Stamped 'LA 10-R14.84 LS 5679 1990' having
25 established NAD 83 grid coordinates of North 1836464.48 feet and East
26 6478559.03 feet, Zone 5 of California Coordinate System as shown on said
27 Survey Control Map, bears North 79 degrees 32 minutes 40 seconds West
28 5537.57 feet;
29 238. thence North 34 degrees 00 minutes 20 seconds East, 144.70 feet;
30 239. thence South 55 degrees 50 minutes 39 seconds East, 13.00 feet;
31 240. thence North 34 degrees 00 minutes 20 seconds East, 350.00 feet;

P S O M A S

- 1 241. thence North 55 degrees 50 minutes 40 seconds West, 13.00 feet;
- 2 242. thence North 34 degrees 00 minutes 20 seconds East, 50.52 feet;
- 3 243. thence South 55 degrees 59 minutes 45 seconds East, 13.00 feet;
- 4 244. thence North 34 degrees 00 minutes 21 seconds East, 33.00 feet;
- 5 245. thence North 34 degrees 39 minutes 06 seconds East, 89.10 feet;
- 6 246. thence North 57 degrees 51 minutes 07 seconds West, 101.07 feet;
- 7 247. thence North 52 degrees 03 minutes 56 seconds West, 122.81 feet;
- 8 248. thence North 57 degrees 48 minutes 06 seconds West, 20.01 feet;
- 9 249. thence North 52 degrees 03 minutes 56 seconds West, 180.91 feet;
- 10 250. thence North 34 degrees 03 minutes 37 seconds East, 253.59 feet;
- 11 251. thence North 49 degrees 26 minutes 34 seconds East, 255.52 feet POINT OF
- 12 BEGINNING.

13
14
15
16
17
18
19
20
21
22
23
24
25
26
27
28
29
30
31

Containing 14.69 Acres

This geographic description has been prepared for jurisdictional boundary changes, pursuant to Section 54900 to 54903, of the Government Code, and is not related to property ownership.



Robert C. Olson, PLS 5490

Psomas

11.12.2001



DRAFT

EXHIBIT B

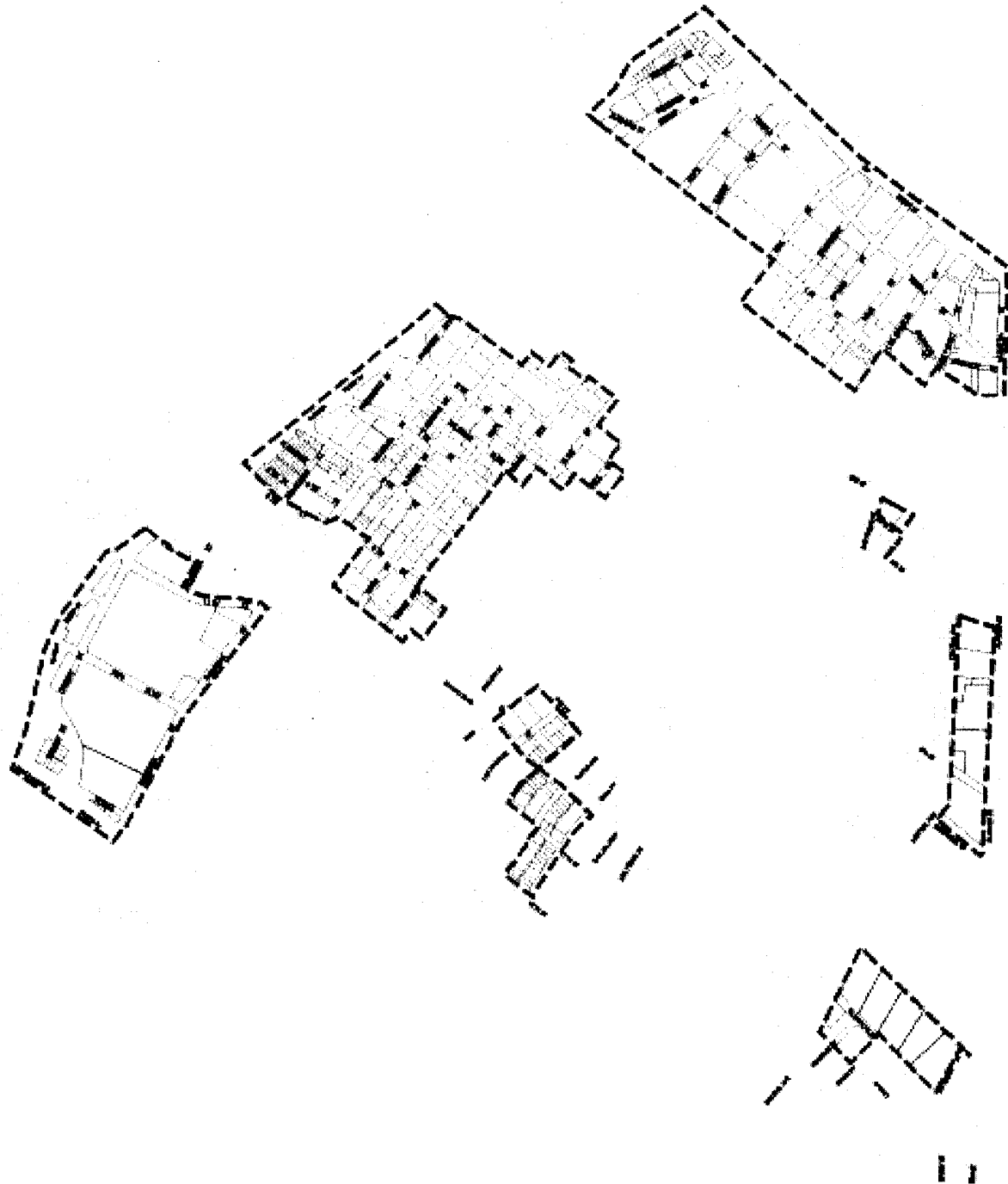
REVISED MAP OF PROJECT AREA

[behind this page]

Parcel Line Base Map
Redevelopment
Project

Community
Redevelopment
Agency

City
of
Los Angeles



Prepared by
CRA GIS Team
09/08/02

Legend
Project Boundary

